

48" LUCERNE VANITY

PRODUCT SPECIFICATIONS

Height: 38-1/2" - includes 4" backsplash

Depth: 19"

Width: 48"

Solids: Yellow Poplar

Veneers: (MPW) Engineered Oak

Panels: MDF

Number of Doors: Two

Number of Drawers: Six

USB/Power Component: Yes
(ETL5011080)

Cord Length: 6'6"

Installation Type: Floor Standing

Assembly Required: Attach the top
with sink to the cabinet

Hardware Features: European Soft-
Close Hinges, Full Extension Soft-Close
Glides, Adjustable Levers

Hardware Material: Zinc Alloy

Hardware Finish: Champagne Brass
(BW, DPO, MPW) and Satin Nickel (SBL)

Sink Top Included: Yes

Sink Top Material: Engineered Carrara
Marble

Number of Basins: One

Faucet: 8" Widespread - not included

Basin Overflow: Yes - facing front

Fits Drain Hole Size: 1-3/8"

AVAILABLE FINISHES

 BRIGHT WHITE
MN241V48BW

 CHAMPAGNE
BRASS

 DEEP OLIVE GREEN
MN241V48DPO

 CHAMPAGNE
BRASS

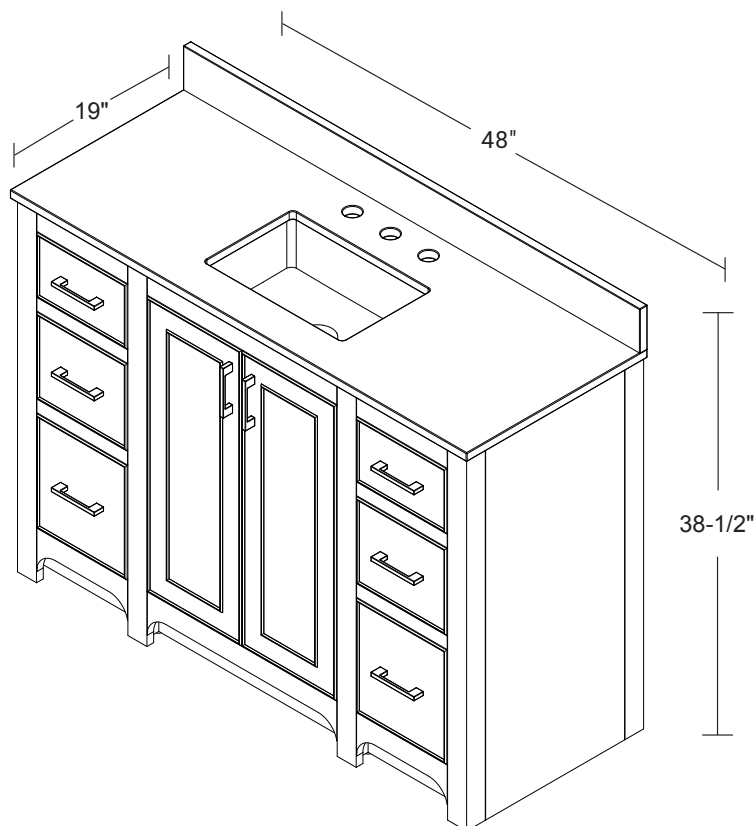
 DARK MAPLEWOOD
MN241V48MPW

 CHAMPAGNE
BRASS

 SOFT BLUE
MN241V48SBL

 SATIN NICKEL

PRODUCT DIMENSIONS



All dimensions are nominal

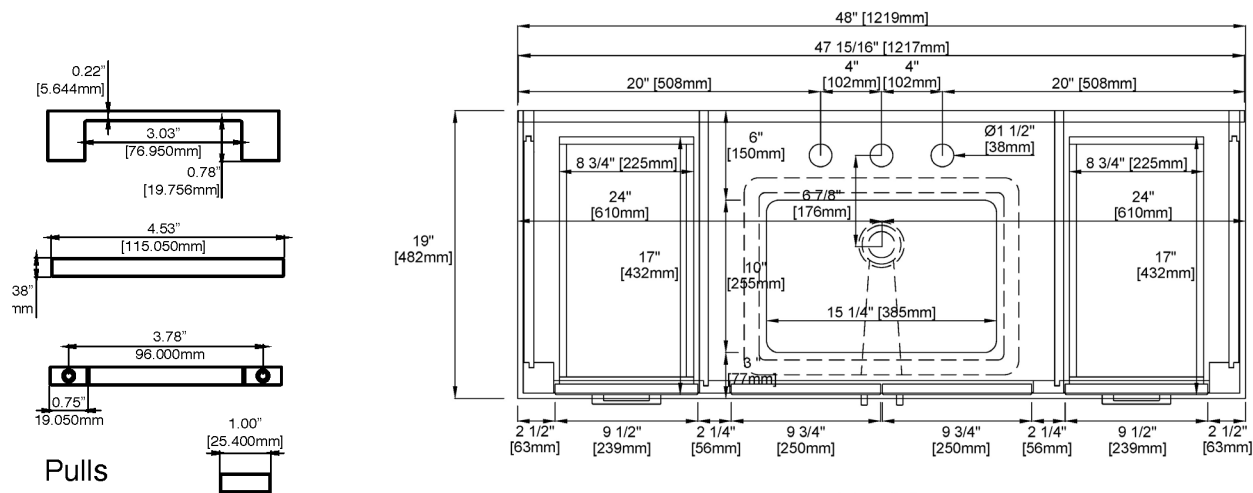


ASME A112.19.2-2018/CSA B45.1-18

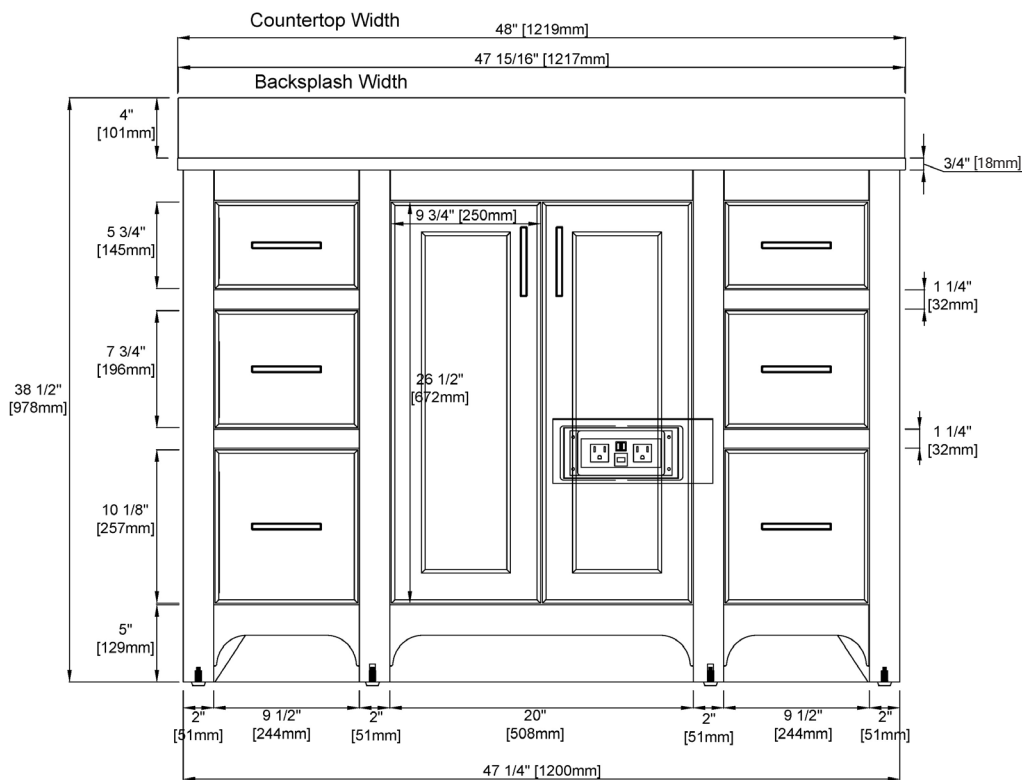
SINK MODEL: F2014B
CUPC FILE NO: 14592

48" LUCERNE VANITY

PRODUCT DIMENSIONS



Top View

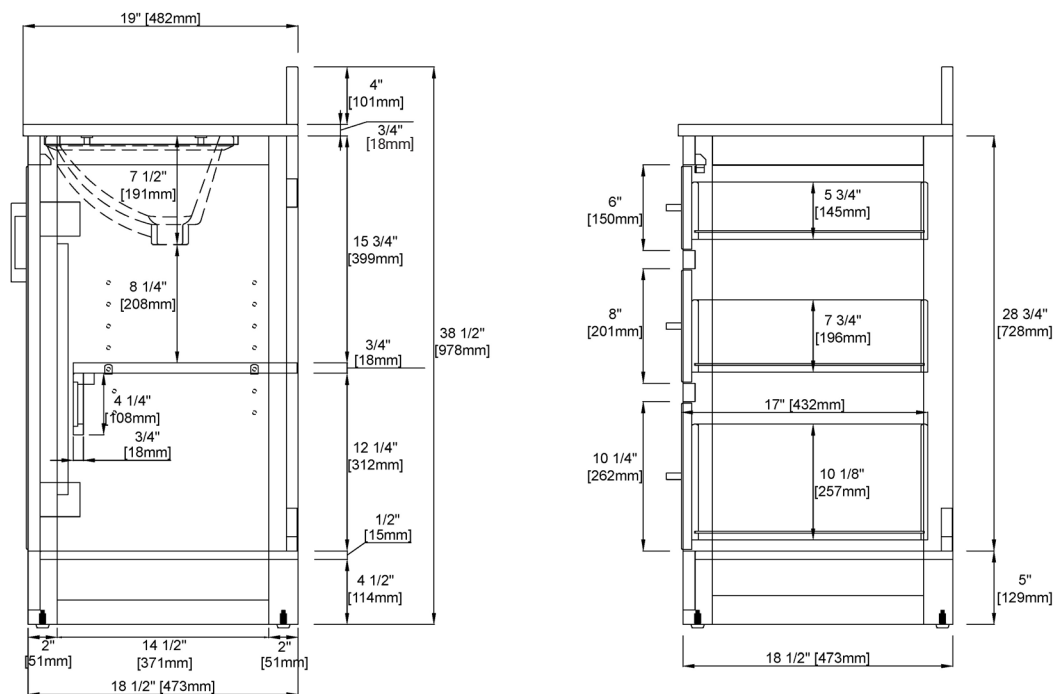


Front View

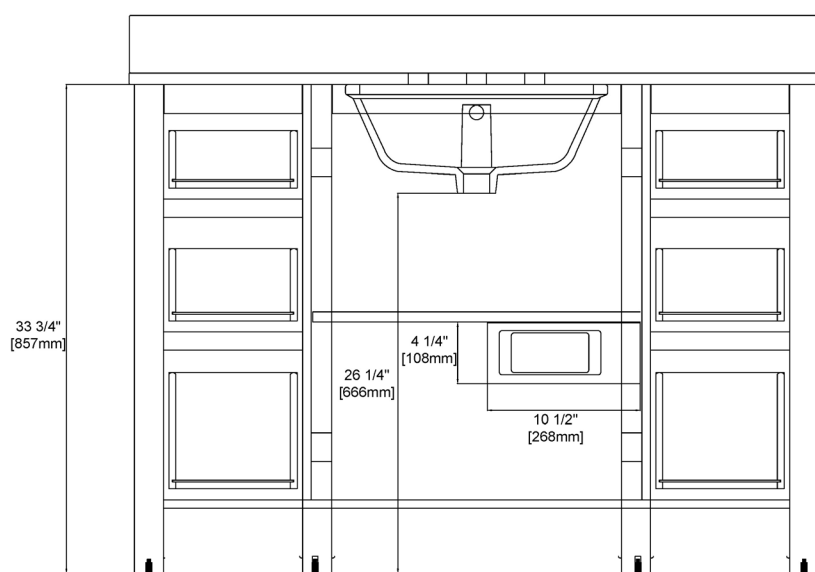
All dimensions are nominal

48" LUCERNE VANITY

PRODUCT DIMENSIONS



Side View



Back View

All dimensions are nominal

3/3